

October 16th, 2012

Payroll Group

Highlights

- Document Management Systems
- Employee Self Service
- QCC Migration

Evolution



User Preference Settings Load Print Manager sheets? Only my users. Automatic load of Job Lines 151251171 Load on demand.

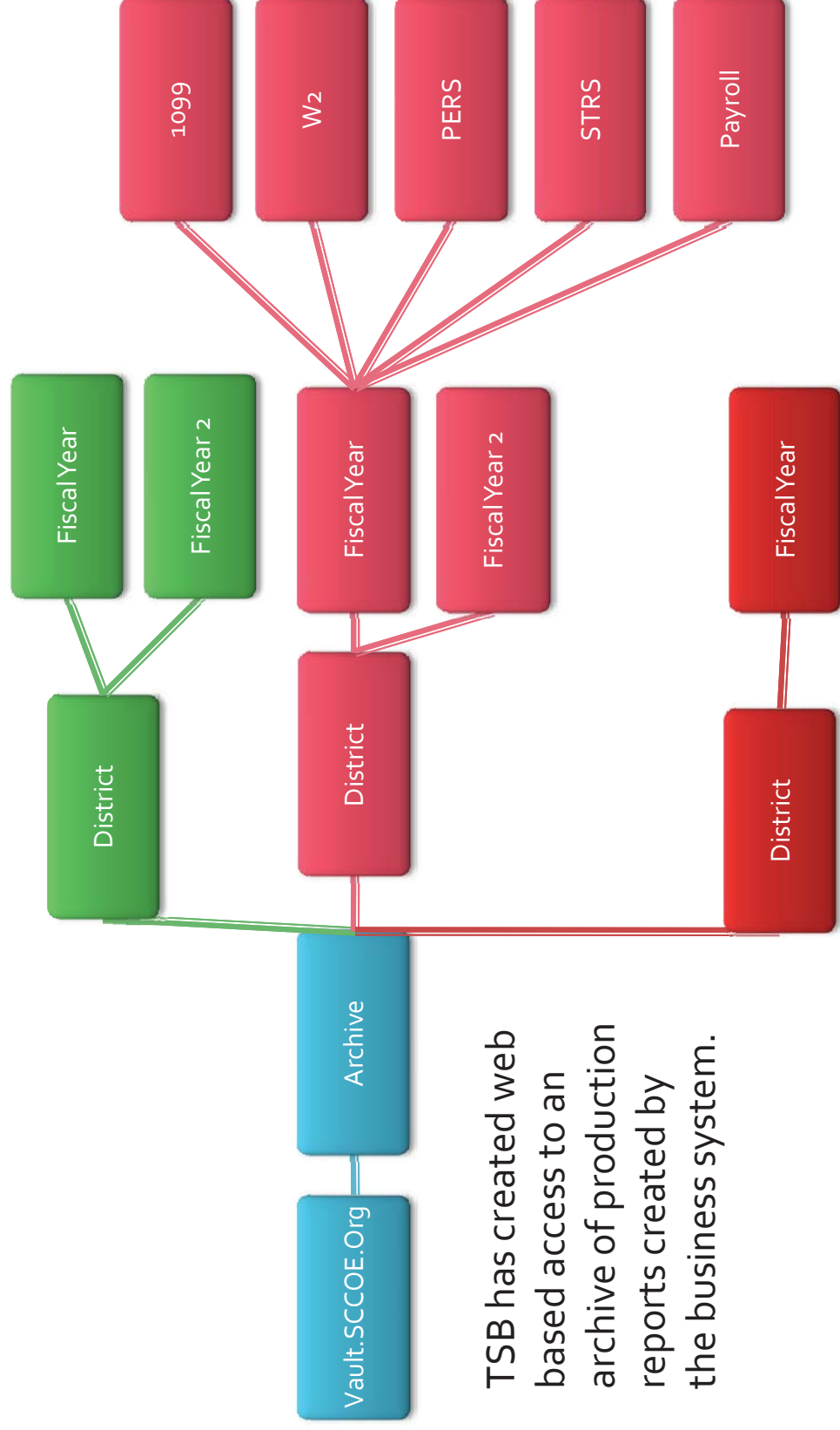
Job	Date	Program Title	Program User
1001	10/22/2012	HANDS ON LEARNING	10/22/12 11:15
1002	10/22/2012	HANDS ON LEARNING	10/22/12 11:15
1003	10/22/2012	HANDS ON LEARNING	10/22/12 11:15
1004	10/22/2012	HANDS ON LEARNING	10/22/12 11:15
1005	10/22/2012	HANDS ON LEARNING	10/22/12 11:15
1006	10/22/2012	HANDS ON LEARNING	10/22/12 11:15
1007	10/22/2012	HANDS ON LEARNING	10/22/12 11:15
1008	10/22/2012	HANDS ON LEARNING	10/22/12 11:15
1009	10/22/2012	HANDS ON LEARNING	10/22/12 11:15
1010	10/22/2012	HANDS ON LEARNING	10/22/12 11:15
1011	10/22/2012	HANDS ON LEARNING	10/22/12 11:15

- Traditionally reports were delivered on paper or on CD archives
- Cost containment and Efficiencies
 - Created process within QSS that provides reports electronically for 45 days
 -Districts continue to request historic data including data from IFAS, sunset in 2002
 - We might have the data but it was realistically not accessible

TSB Project – Electronic Report Distribution

- Implemented Laserfiche Web making the data store remotely accessible
- Purchased one license for each current district and created archive architecture and accounts
- Currently moving and indexing historical documents to Laserfiche
- Future – Production reports will be delivered directly to LaserFiche

Archive for QSS Documents



TSB has created web based access to an archive of production reports created by the business system.

Document Management Services - Demonstration

ESS

- Production
- Looking for interested districts 😊
 - Stand alone
 - Single Sign On
- Still working on PDF of warrants (requires new checkwriter software)

TRA Training

- Position Control Overview 11/6/2012
- Printing Comments on Pay Warrants
1/17/2013
- Microsoft Office and Adobe training available

What Migration looks like, dates and version

2/25/2010	1.26.2	11/4/2010	1.29.4	9/9/2011	1.33.1
3/19/2010	1.26.3	11/12/2010	1.30.0	9/23/2011	1.33.2
4/8/2010	1.27.0	12/2/2010	1.30.1	10/16/2011	1.33.3
4/17/2010	1.27.1	12/15/2010	1.30.2	11/1/2011	1.33.4
4/27/2010	1.27.2	1/7/2011	1.30.3	11/15/2011	1.33.5
5/12/2010	1.27.3	1/20/2011	1.30.4	11/29/2011	1.33.6
5/25/2010	1.27.4	2/3/2011	1.30.5	12/9/2011	1.34.0
5/27/2010	1.27.5a	2/11/2011	1.30.6	1/10/2012	1.34.1
6/4/2010	1.27.5b	2/17/2011	1.30.7	1/20/2012	1.34.2
6/10/2010	1.27.6	3/11/2011	1.31.0	2/3/2012	1.34.3
6/11/2010	1.28.0a	3/18/2011	1.31.1	2/17/2012	1.34.4
6/21/2010	1.28.0b	3/28/2011	1.31.2	3/1/2012	1.34.5
6/25/2010	1.28.1	4/1/2011	1.31.3	3/29/2012	1.35.0
7/7/2010	1.28.2	4/15/2011	1.31.4	4/6/2012	1.35.1
7/8/2010	1.28.3	5/6/2011	1.31.5	4/20/2012	1.35.2
7/9/2010	1.28.3	5/13/2011	1.31.6	5/9/2012	1.35.3
7/15/2010	1.28.4	5/27/2011	1.32.0	5/18/2012	1.35.4
7/22/2010	1.28.5a	6/16/2011	1.32.1	6/1/2012	1.35.5
7/23/2010	1.28.5b	6/30/2011	1.32.2	6/19/2012	1.36.0
8/27/2010	1.29.0a	7/11/2011	1.32.3	6/29/2012	1.36.1a
8/27/2010	1.29.0b	7/15/2011	1.32.4	7/3/2012	1.36.1b
9/28/2010	1.29.1	8/10/2011	1.32.5	7/13/2012	1.36.2
10/12/2010	1.29.2	8/19/2011	1.33.0a	7/23/2012	1.36.3
10/21/2010	1.29.3	8/26/2011	1.33.0b	8/10/2012	1.36.4

Outstanding Areas

- QCC Stores untested, not released
- QCC DBAS untested
- Board Warrant Report not received

QCC Reported Issues

- Payroll
- Human Resources
 - Step problem on EA
- Finance
 - Indirect costs
 - Fixed Assets
 - Travel claim entry screen – wrong error message

Security Model

ADD EMPLOYEE	EA (Enhanced Position Control)	MA
AH	EC	PE
AL	EU	PO (Standard Position Control)
AP	EV	SI
CD	IN	SK
CR	JH	TS
DE	JS	VE
W4	CO	TE
CL	DR TABLE (MGR ONLY)	PAYROLL Direct Deposit
PI	PR	TC
PD	BM	ME
EM	HA	IM

Security Variance

- Districts with variances will have a different service level
- Districts test customized configuration for each release
- Authorized Signer contracts TSB, variance form signed
- Escalation if variance request is potential audit exception